

Letter from President



“Helping individuals, individually” is our firm’s slogan that I’ve worked under for many years. I think it resonates with what we do in EWI. We help individuals, individually. We do this through our program for women’s scholarships, which we know help the individual recipients further themselves. We do this by impacting the young lives of the many girls that attend our annual Reading Rally by promoting reading where they can go on to learn anything. We do this through our membership meetings by networking with other members helping them to further their businesses. We do this through our speakers that help us to be more informed and to be better stewards in our communities. I am proud to be a member of EWI and what we do.

Please join me this year in focusing on building our organization so we have more helping hands to spread the good works of EWI.

Donna Patterson
Chapter President
South Texas Money Management, Ltd.

2018-2019 Officers & Directors

President

Donna Patterson, South Texas Money Management, Ltd.

Vice President

Gracie Martin, Ensemble Group

Secretary

Mary Beth Riley, D & R Sales Co.

Treasurer

Mary Jane Hamilton, TAMUCC

Ways & Means

Carla Hoffman and Charlotte Hintz, HRS, LLC.

Membership Director

Karen Barnes, L.K. Jordan & Assoc.

Sergeant-at-Arms

Linda Calhoun, Marlin Works

Programs

Holly Lewis, Inspire Magazine

Director At Large

Dr. Bunny Forgione, TAMUCC

Publications Director

Mary Helen Johnston

EWI Featured Committees

Membership & Orientation Committee

Chairman: Karen Barnes

LK Jordan and Associates

361-814-3517

Karen.barnes@lkjordan.com

This Committee recruits new members.

They follow all Corporate bylaws as well as local Chapter bylaws when processing and recruiting new members. Once a candidate is proposed, they help us follow the appropriate procedures to getting them through the process, approved, and introduced to the membership at their first EWI Chapter luncheon meeting. They also maintain the current membership roster. This is a very important committee and could really use your talents. Please consider serving on the Membership and Orientation Committee by contacting Karen Barnes.

Reading Rally Committee

Chair Vacant

EWI Corpus Christi Chapter has been hosting this annual event in cooperation with the local YWCA. The event takes place at the YWCA facility and promotes the importance of reading and staying in school to 5th grade girls in our Corpus Christi and Coastal Bend area. This is a signature event in all chapters of EWI in the USA and internationally. The day is filled with activities, arts and crafts, motivational speakers and free books to take home. The students mostly come from underserved communities and we provide such hope and inspiration to these young girls. This is a done-in-a-day project that really makes a difference. We need a motivated member that is willing to chair this vital committee and some more EWI members that want to volunteer to help support this worthy cause. Contact Donna Patterson to help our chapter fill this position and serve. 904-0551 or email dpatterson@stmmltd.com

Membership News

DR. BUNNY FORGIONE, past President of EWI CC Chapter, is an honoree of YWomen In Careers 2019. Bunny is executive associate dean of the College of Nursing and Health Sciences at Texas A&M Corpus Christi and a pioneer in online baccalaureate nursing education, having created the country's first such program that enables nursing students to learn anywhere, anytime. She is a sought-after scholar in the area of maternal child health. She is a leader in changing the demographics of nursing to be more reflective of the community, increasing access to nursing education for underserved minorities and working to insure successful outcomes. What an awesome professional she is! I know we are all so proud of Bunny and so glad to see her recognized for her accomplishments.

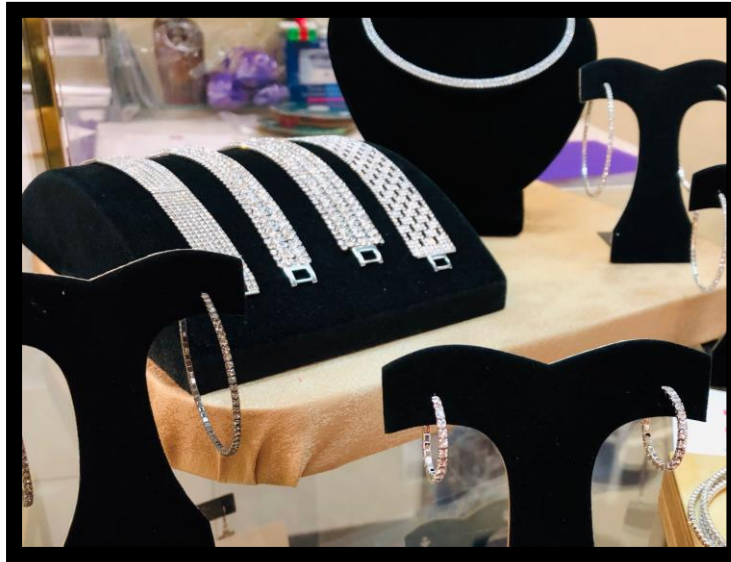
YWomen in Careers celebrates successful women and what they have achieved...and shows YWTeens and other young women what is possible for them! Thanks to all of you for supporting Bunny and the YWCA! To nominate a woman for this award in 2020 and to find out more about the YWCA, go to www.ywcacc.org.

By Nancy Wesson-Dodd, President/CEO

Calling All Past Presidents!

Our Corpus Christi Chapter is calling on all past presidents to plan on serving on the Past Presidents Advisory Committee. The current president can ask the committee and its members to advise, research and review concerns that come up within our chapter throughout the year. The sage wisdom of our members that have led our chapter as president is so valuable. We have Linda Allen with HEB Company that will oversee this group, so contact her at allen.linda@heb.com or call 361-857-1706 to serve.

Firm Night at Victoria's Jewelers





Equal Pay Day

Did you know that April 2nd is the date where a woman is paid the same amount that her male counterparts earned in the previous year ending December 31st. It takes almost four additional months to equal the salary of the man doing the same job and having the same qualifications! The facts are based on current research data and even though the business culture is changing, it is still an area of concern. Interesting conversations on this topic will take place locally. April 2nd, 2019 from 11:30- 1:00 will be the YWCA sponsored Luncheon and Panel Presentation at First Methodist Church on Shoreline. Our local Executive Women International chapter is one of the underwriters. The event is in the final stages of planning and details will be announced but if you are interested in attending this event please contact Beverly at ywcacc@ywcacc.org.

DATES TO NOTE

March 6, 2019

Noon EWI Chapter Meeting
at the Corpus Christ Art
Center

August 2-3, 2019

Texhoma Conference at the
Corpus Christi Omni Hotel.

September 18-21, 2019

LCAM in Milwaukee,
Wisconsin

April 2, 2019

Equal Pay Day Presentation



We are excited to bring you information to help you plan your conference activities and encourage all of our members and chapters to get involved in the 72nd Leadership Conference and Annual Meeting (LCAM) in Milwaukee, Wisconsin from September 18-21, 2019.

LCAM Vendor Registration

We encourage your business and chapter to get involved with conference attendees by securing a vendor booth. Please contact Barb Benish, EWI of Milwaukee, at benish.barb@basco.com for more information.

Conference Registration

Log in to ewiconnect.com to access conference registration.

\$650 – February 15 to June 14, 2019 – Early Registration
\$750 – June 15 to September 13, 2019 – Regular Registration
\$195 – Leadership Caucus

Host Hotel – The Pfister Hotel

Our hotel reservation link is located on our conference information website – www.ewiconnect.com/lcam2019. Chapters are encouraged to only book the amount of rooms needed at the time that they register for conference. To ensure that all EWI members are able to reserve a room within our room block, we will be monitoring conference registrations and hotel reservations to make sure that paying conference attendees are able to reserve a room at the hotel. If we have questions, we will be contacting members for clarification. Our host hotel is larger than the hotels we've had the past two years and there are a number of suites available for chapters based on hotel availability at time of booking.

Book by August 16, 2019 at our special rate of \$179 per night.

Leadership Caucus

This year's Leadership Caucus is a half-day of EWI basics, history, operations and important information for all Chapters. We invite all INCOMING President's and Presidents Elect to join us on Wednesday, September 18, 2019. All Leadership Caucus registrants will attend our Corporate Reading Rally in the morning. Those attending should plan to travel to Milwaukee on Tuesday, September 17, 2019.

LCAM Justification Kit

EWI has provided an LCAM Justification Kit for member representatives to use to gain approval to attend the conference with your firms. You can find these documents at ewiconnect.com/lcam2019 or search the LCAM 2019 folder in the MIC. Documents will be added as they are updated for member reference.

Keynote Speakers

Karen McCullough
www.karenmccullough.com

Change is Good... You Go First

Jeffrey Butler
www.jeffbutler.com

**21st Century Leadership -
How to Cultivate Leadership
in Today's Workplace**



LCAM 2019 Sponsorship Opportunities

We have a variety of conference sponsorship opportunities this year. We encourage chapter participation, firm participation and individual contributions to help EWI provide our annual meeting and conference to all those that attend. We greatly appreciate everyone's support! Sponsorship options are available on our website at ewiconnect.com/lcam2019 and in the Member Information Center (MIC) to download and review along with a letter to provide to your firm for support. A separate communication will be sent to all members to extend sponsorship opportunities to you and your firm. If you have questions on sponsorships, please contact Cortney Ihde at cortney@ewiconnect.com or 262-269-5625.

EWI Swag Bags

If your company has promotional items to offer, or your chapter would like to contribute a logo'd item, please contact Jennifer Franklin, EWI of Nashville, at jennifer.franklin1969@gmail.com. Quantity Requested: 250 Identical Items

Conference Volunteers

If you plan to attend LCAM 2019 and would like to volunteer for a portion of the event, we'd love to have you involved and engaged. Please contact Cathey Shaffer, EWI of Denver, to express your interest. She can be reached at cathey.shaffer@wellsfargo.com.

Additionally, please review our event webpage (www.ewiconnect.com/lcam2019) for information on our Keynote Speakers and our Academy of Leadership (AOL) Modules. Each of these programming options will inspire you and develop you professionally to enhance your ability to lead in both your career and your chapter volunteer service.

**Questions??? – Any questions can be directed to the EWI Corporate Office
at 262-269-5625 or Cortney@ewiconnect.com**



Minutes of the Board of Directors Meeting
EWI of Corpus Christi
Date: 1/30/2019

Call to Order	Meeting was called to order at 12:02pm by President Donna Patterson
Roll Call	Gracie Martin, Holly Lewis, Mary Beth Riley, Linda Calhoun, Laura Hausman, Donna Patterson, Karen Barnes, Mary Jane Hamilton. Attending via conference call: Carla Hoffman and Mary Helen Johnston
Minutes:	
Treasurer's Report:	
<p>Mary Helen moved to accept the October, November and December financial reports as presented. Motion passed. Donna reported that she had presented the budget to the membership electronically. Laura Hausman moved to accept the budget as presented and Gracie Martin seconded. Motion passed by electronic vote.</p> <p>Donna presented the Treasurer's report with cash position at January 31, 2019 as follows: American Bank - \$39,636.10; NACCU B/C/DP checking - \$8,502.41; NACCU B/C/DP Share Acct. - \$25.00; NACCU Share Acct.- \$27.10; NACCU CD - \$14,645.92; Petty cash - \$40.00. Total - \$62,876.53. Donna also presented the balance sheets from the Grease fundraiser. Laura Hausman moved to transfer \$10,725.00 from the operating account to the B/C/DP account. Mary Jane Hamilton seconded and the motion passed. Laura Hausman moved to approve the January financials as presented and Mary Beth Riley seconded. Motion passed.</p>	
President's Report:	
<p>President Donna Patterson discussed the changes in Membership classes and dues from Corporate. Discussed raising Chapter admission fee to better cover our expenses since Corporate lowered their fee and would not result in an overall increase. Mary Beth Riley moved to increase our Chapter admission fee from \$55.00 to \$75.00 and Gracie Martin seconded. Motion passed.</p> <p>Donna announced that Dianne LaRue will be heading the committee for the Regional Conference. Donna will submit the amended Chapter Bylaws to membership for approval at the February meeting.</p>	
Vice President's Report:	
<p>Gracie Martin shared some leadership ideas from the last leadership call including:</p> <ul style="list-style-type: none"> • Hosting a "Happy Hour" maybe once a month for members to get to know one another in an informal setting. • Firm Highlight once a month at chapter meeting. • Reinstate the Orientation to welcome and introduce new members. <p>Gracie volunteered to create a starting check list of actions to be taken when a new member joins.</p>	
Communications:	
Committee Reports:	
Sergeant at Arms Report:	
Website:	

Scholarship:	
Membership:	
Membership Orientation:	
Nominating Committee:	
Public Relations:	
Reading Rally:	
Standards of Excellence:	
Ways & Means:	
Change of date for fundraiser to September 11 was announced.	
Publications:	
Programs:	
<p>Holly asked for volunteers to say the prayer at meetings.</p> <p>She announced that Morgan Bartel with Inspire Magazine is the speaker for the next meeting.</p> <p>Karen Urban will speak on "Social Media in the Work Place" at the following meeting.</p>	
Unfinished Business:	
New Business:	
<ul style="list-style-type: none"> Donna asked for someone to head up getting an EWI table for the Y Women in Careers banquet. Donna is putting together more information for our membership list. The June Board meeting will be held at Donna's office since the Yacht Club is not available that month. 	
Announcements:	
Adjournment: Meeting was adjourned at 1:10.	
Approved:	Submitted: Mary Beth Riley